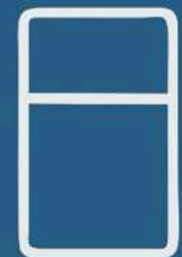
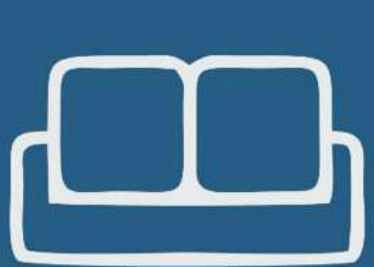


## CORPORATE PROFILE





# WELCOMES

To



By. SA Enterprises

# About The Company

BOALT SA Enterprises was established in 1997 by our founder Mr. Hemant Sharma.

As a 5th generation prodigy in a long list of successful craftsmen in the family, Mr. Sharma picked up the intricacies of the craft at a young age. Following many successful projects and recognition, Mr. Sharma founded BOALT to bring his expertise to turnkey furnishing solutions.

The company specializes in large scale institutional projects like schools, offices, and residential apartments. A special focus is given to Government sector projects, where BOALT has managed to carve out a niche for itself with multiple national and international projects of repute over the past two decades.



1860-1880



1880-1925



1925-1975



1975-1996



1996-Present





## Facility

### > Design and Build Capability - A Success Story

A big factor for our success thus far are our Designing and Manufacturing capabilities.

Most of our expert craftsmen have worked with us for a long time, perfecting their impressive skills.

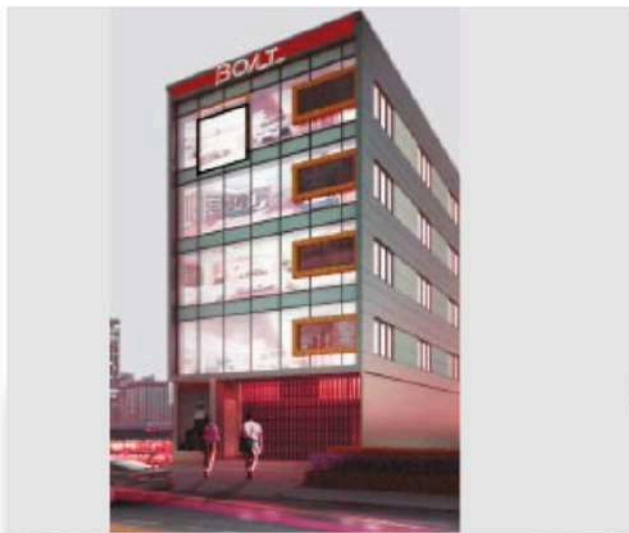
In addition to highly skilled craftsmen, we also have the latest tools and machinery in the business, our own manufacturing facility in Rajasthan, a wood seasoning plant and much more. All of which enables us to give you a truly end-to-end service, along with our other in-house capabilities, like logistics, testing lab, experience centre.

**Corporate Office**

**Experience Centre**

**R&D**

**Manufacturing Facility**





## Top management team behind the S A Enterprises



Hemant Sharma,  
**Proprietor**



Anu Sharma,  
**Executive Director**



Balwinder Singh  
**Administrator**

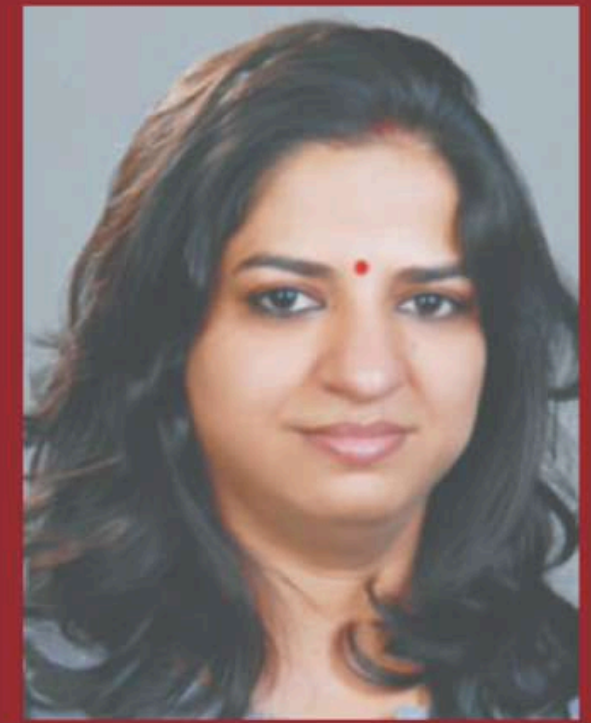




**NIRMAL SHARMA**  
Associate Director



**CA R K DHIMAN**  
Financial Advisor



**POOJA SHARMA**  
Corporate HR



**MONICA SHARMA**  
Financial Head



**ANJU SHARMA**  
Relationship Manager



**SATISH SHARMA**  
Quality Manager



# Our corporate office in dwarka, new delhi





# R&D





# In-house designing





# In-house logistic's





# OUR FOUR STRONG DIVISIONS



Business

An orange icon of a modern office building with a central entrance and multiple windows.

Hospitality

☆☆☆☆☆

An orange icon of a hotel building with a central entrance, multiple windows, and a tree to the left.

Education

An orange icon of a school building with a clock tower and a flag on top.

Residential

An orange icon of a simple house with a chimney and a door.



## Our Mission

To revolutionize end-to-end furnishing solutions for institutions of all sizes.

## Our Vision

BOALT aspires to create experiences for its customers that bring traditional design and build philosophy together with global standards of finishing, through a customer-first approach.

## Our Expertise

From material procurement to in-house logistics, we are a self-sufficient company that has a proven track record of delivering end-to-end mid- to large-sized projects.

Our core competencies include, but are not restricted to -

Furniture designing and manufacturing

Best raw materials procurement

In-house logistics channel

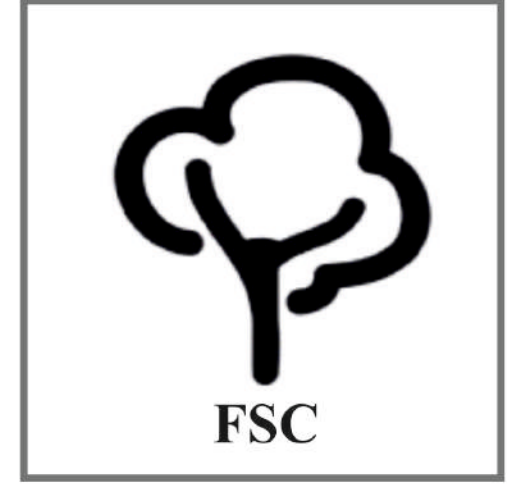
Customized solutions for clients

Project management

Specialization in remote area sites

Specialization in public sector projects





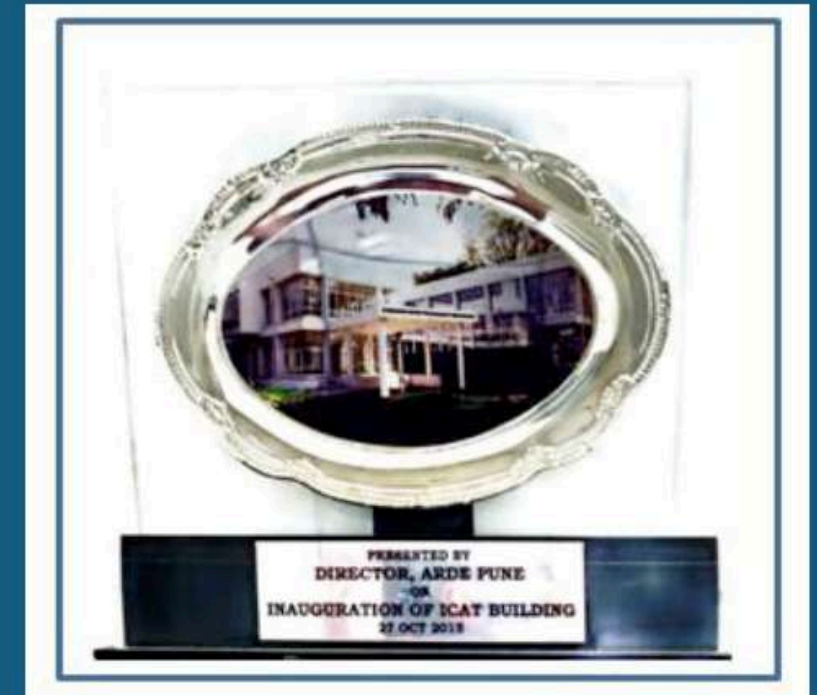


# Our Esteem Customers





# APPRECIATION'S FOR ACHIEVEMENT



PXE Office  
Chandipur, Orissa



DRDO  
(Hyderabad)





Gujarat Bhawan, New Delhi



## Design and Build Capability ~ A Success Story

Big factors for our success thus far are our Designing and Manufacturing capabilities.

Most of our expert craftsmen have worked with us for a long time, perfecting their impressive skills. In addition to highly skilled craftsmen, we also have the latest tools and machinery in the business, our own manufacturing facility in Rajasthan, a wood seasoning plant, and a paint booth. All of which enables us to give you a truly end-to-end service, along with our other in-house capabilities, like logistics.





# Our manufacturing facility set up in Rajasthan





# Our Manufacturing Facility





# Our Manufacturing Facility

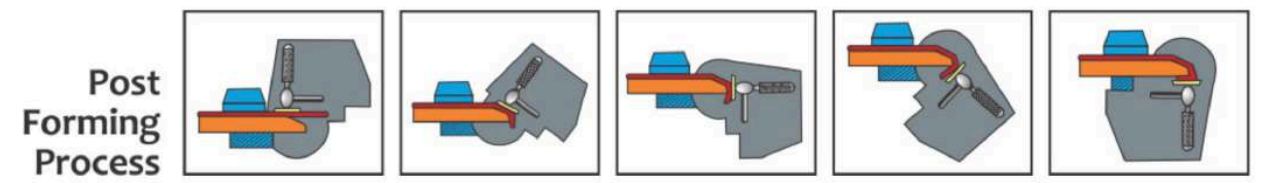
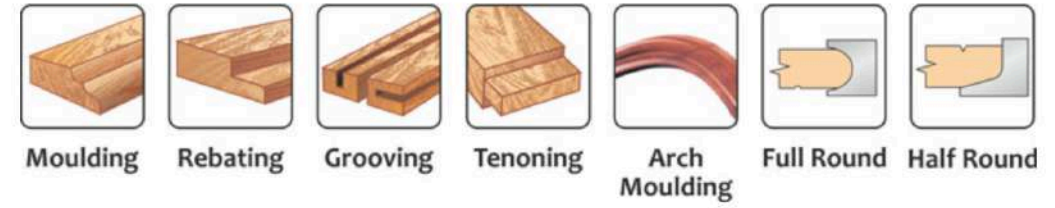




# Latest automatic CNC and semi automatic machinery



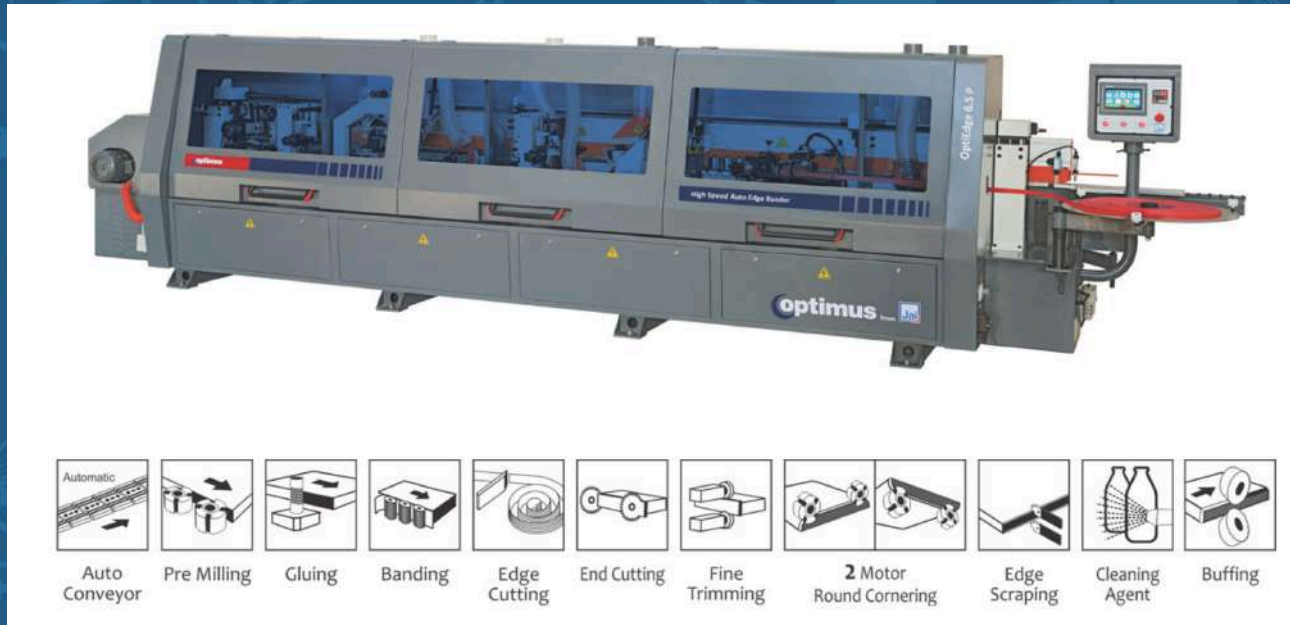
















## BEST SIX PROJECT

1. Gujrat bhawan
2. Madhya Paresh bhawan
3. VVIP guest house wheeler island orissa
4. Terminal Building At Kartarpur Corridor
5. Indian High Commission of Islamabad in, Pakistan
6. Indian High Commission of ,nepal





**BOALI.IN**

Ready to Inspire

**GUJRAT BHAWAN**







# GUJRAT BHAWAN





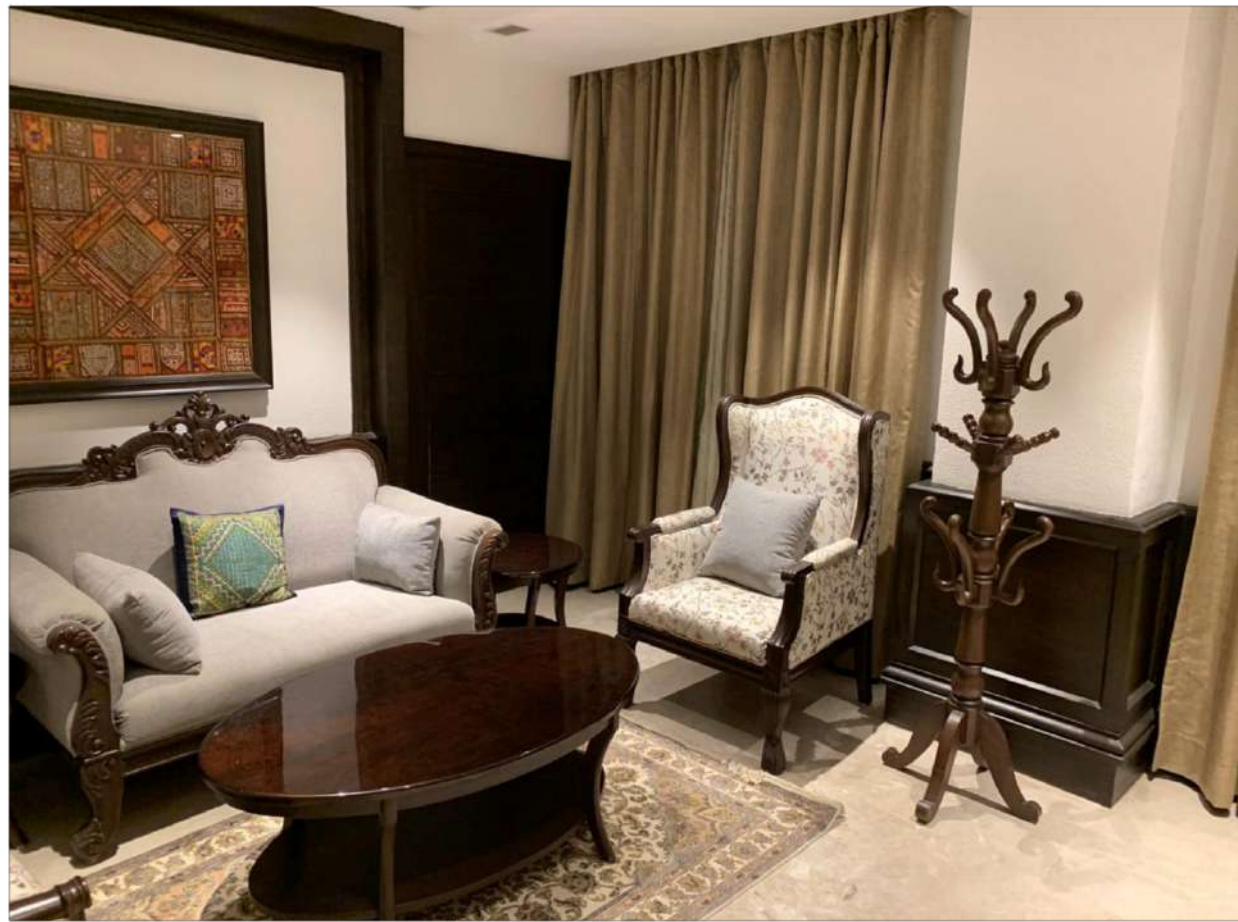


























**BOALI.IN**

Ready to Inspire

Madhya Paresh bhawan







**Madhya Paresh bhawan**







































**BOALI**.IN

Ready to Inspire

Uttarakhand Niwas mockup room







Uttarakhand Niwas mockup room



















**BOALI.IN**

Ready to Inspire

VVIP guest house wheeler island orissa







**VVIP guest house wheeler island orissa**





































BOALI.IN

Ready to Inspire

# Terminal Building At Kartarpur Corridor







**Terminal Building At Kartarpur Corridor**









37

भारत | भारतवर्ष  
Immigration

36

भारत | भारतवर्ष  
Immigration

38

भारत | भारतवर्ष  
Immigration

39

भारत | भारतवर्ष  
Immigration

भारत | भारतवर्ष  
Immigration

भारत | भारतवर्ष  
Immigration

भारत | भारतवर्ष  
Immigration

**ARRIVAL**

- ALL TRAVELERS MUST USE THE PROPER DEPARTURE AND ARRIVAL PROCEDURES.
- Please keep your passport, tickets, and other travel documents in a secure bag.
- Please do not touch or lean on the baggage carousel or conveyor belts.
- Please do not touch or lean on the baggage carousel or conveyor belts.
- Please do not touch or lean on the baggage carousel or conveyor belts.





13  
Euzu Margobind di  
Suro 700-800 1995 - 1996



13  
Suro Mujahid di  
Suro 700-800 1995 - 1996



13  
Suro Mujahid di  
Suro 700-800 1995 - 1996



13  
Suro Mujahid di  
Suro 700-800 1995 - 1996



13  
Suro Mujahid di  
Suro 700-800 1995 - 1996



13  
Suro Mujahid di  
Suro 700-800 1995 - 1996



13  
Suro Mujahid di  
Suro 700-800 1995 - 1996



13  
Suro Mujahid di  
Suro 700-800 1995 - 1996



13  
Suro Mujahid di  
Suro 700-800 1995 - 1996











**BOALI.IN**

Ready to Inspire

Indian High Commission of Islamabad in,  
Pakistan







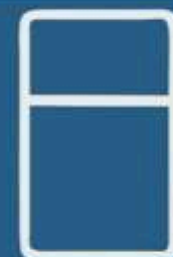
**Indian High Commission of Islamabad in, Pakistan**



**BOALI**.IN

Ready to Inspire

Indian High Commission of ,nepal





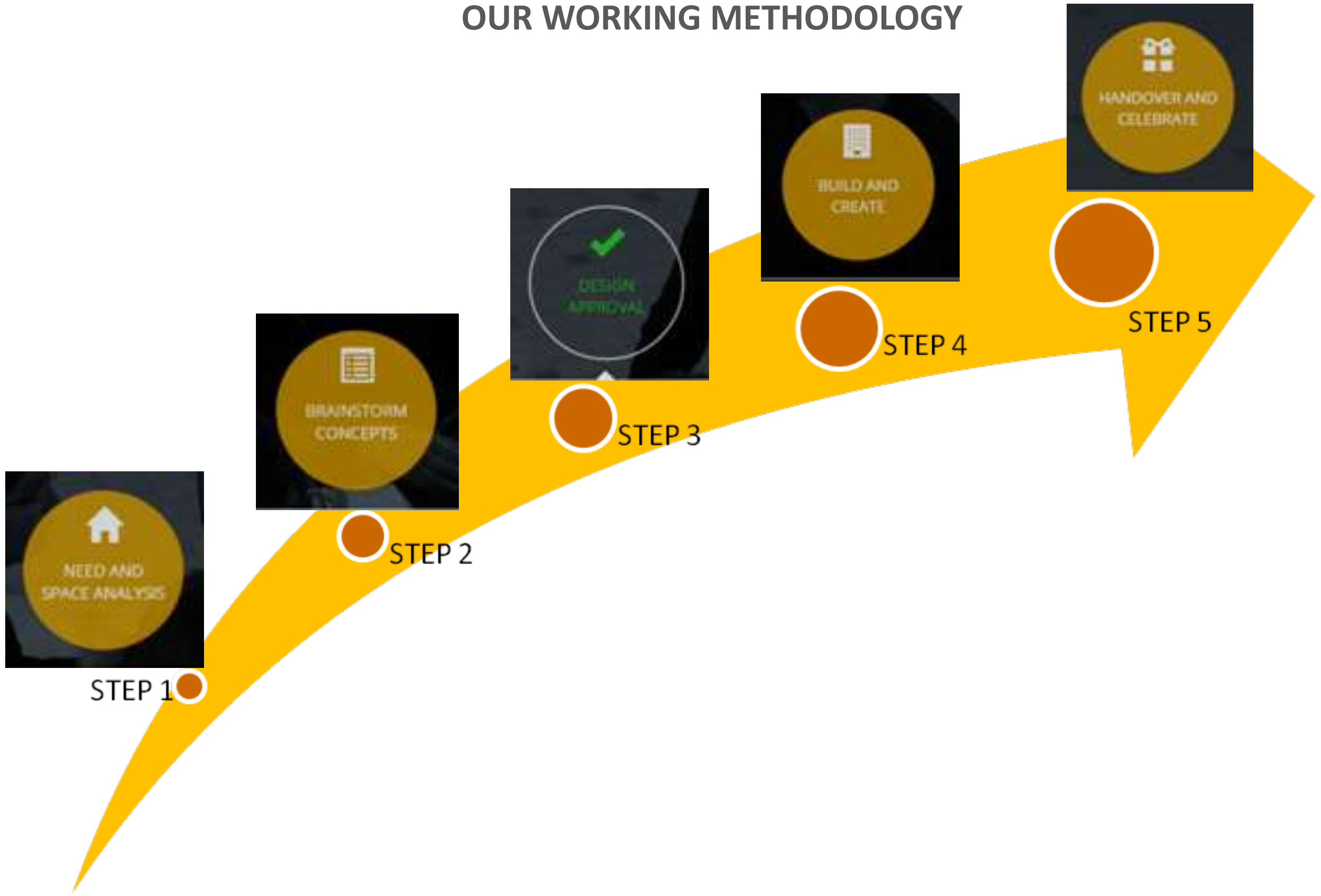


**Indian High Commission of ,nepal**



# HOW WE WORK

## & OUR WORKING METHODOLOGY







Collector office





Collector office





Option No 1





Option No 1





Option No 1





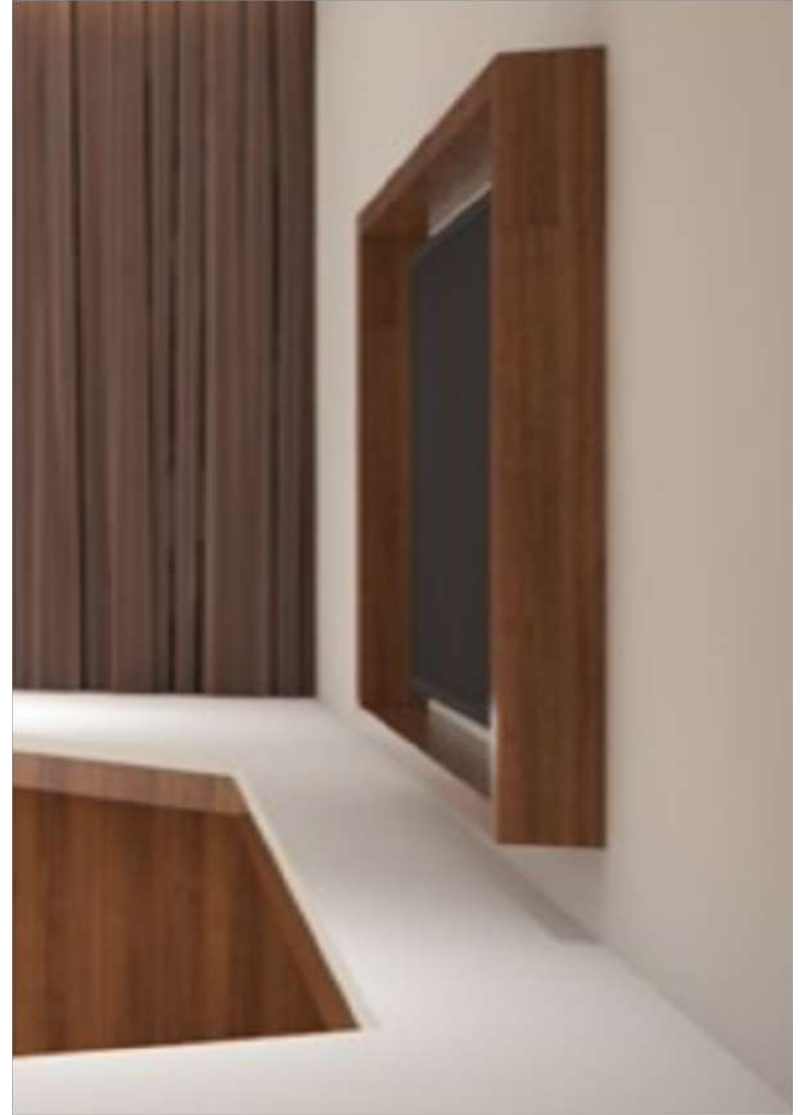
Option No 1



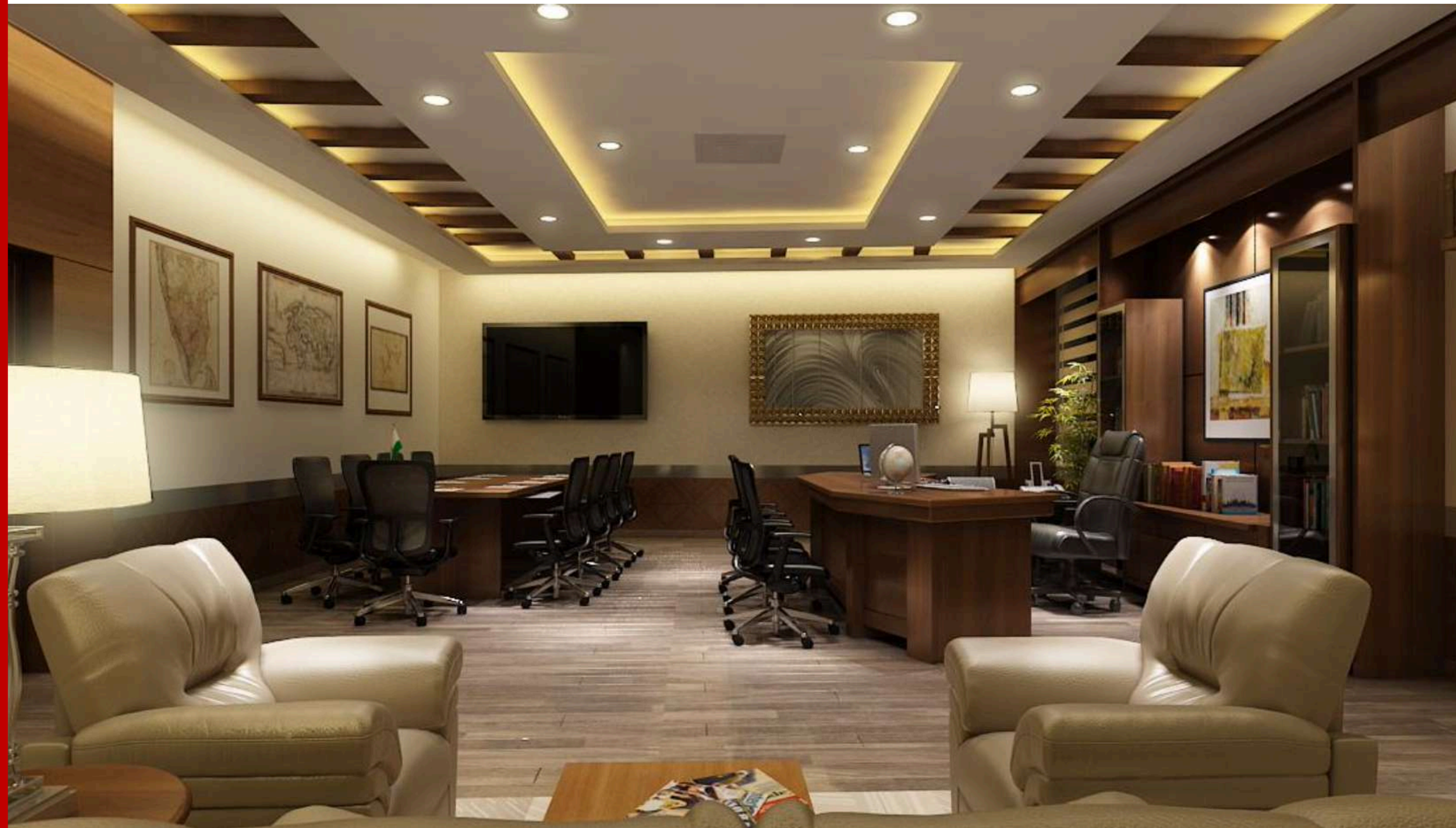


Option No 1









Option No 2





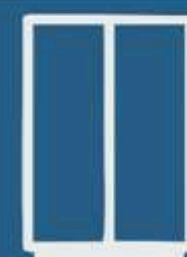
Option No 2



**BOALI**.IN

Ready to Inspire

EX. OFFICE CHAIR







BT-DC001



BT-DC002



BT-DC005



BT-DC006



BT-DC004



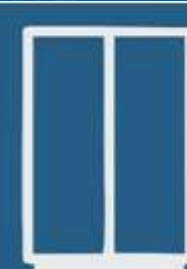
BT-EXC001



**BOALI.IN**

Ready to Inspire

EX. OFFICE VISITOR CHAIR







BT-BC007



BT-BC009



BT-BC003



BT-BC001



BT-BC008



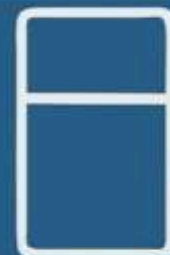
BT-BC002



**BOALI**.IN

Ready to Inspire

EX. CONFERENCE TABLE







BT-CRT-001







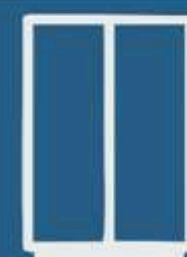




**BOALI**.IN

Ready to Inspire

Ex. Sofa









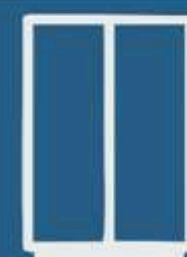




**BOALI.IN**

Ready to Inspire

For reference











# VVIP BED ROOM











BT-DC001









LIBRARY









**LOOK FORWARD  
TO  
SUPPORT & GUIDANCE  
THANKS**



# Enquiry ~ Speak to Us

This is just a small view into the services we render at BOALT. Our real expertise lies in understanding that each project requires a different perspective, and therefore a customized set of services.

For enquiry or just a consultation on an upcoming project, please reach out to us -



+91- 9810122269  
+91- 9810592592



info.boalt@gmail.com  
boalt.office@gmail.com  
www.boalt.in



3rd Floor, B2/302, Kakrola Housing Complex,  
Dwarka Near - Old Palam Road, New Delhi. 110078



PAN INDIA SERVICE PROVIDER



The logo for BOALI.IN features the word 'BOALI' in a white, bold, sans-serif font. The letter 'O' is replaced by a red chainsaw blade with a white center. The '.IN' is in a smaller, white, sans-serif font to the right of 'ALI'.

**BOALI.IN**

Ready to Inspire